

 DOCK 549

Major new build
cross-dock warehouse/
logistics facility.

551,693 Sq Ft (51,254 Sq M)

Situated in the Liverpool
City Region Freeport



Lovels Way
Widnes, WA8 8WQ

 Liverpool
City Region
Freeport

 MIRASTAR

Cross-dock capability effectively doubles your operational efficiency.



XDock 549 at a glance

- ✔ 551,693 Sq Ft (51,254 Sq M)
- ✔ Cross-dock capability
- ✔ Freeport cost savings
- ✔ 999 kWp solar PV system
- ✔ 2x extra large yards 100 & 83m
- ✔ Reach the M62 or M57 in 6 mins
- ✔ Port of Liverpool only 33 mins away
- ✔ Widnes Railfreight 16 mins away

Cross-dock efficiency

The unique cross-dock design of XDock 549 enables simultaneous loading and unloading, effectively doubling your operational efficiency. Minimise handling and maximise speed with this state-of-the-art facility.

A logistics powerhouse in Liverpool's tax and customs **Freeport Zone**, offering major cost-saving incentives.*



SUBSTANTIAL
FREEPORT COST
SAVINGS AVAILABLE
UP TO £15,000,000*

TAX BENEFIT

Tax Benefits offer eligible businesses cash savings through business rates relief and other incentives to support capital investment, skills and employment.

Up to 100% business rates relief on qualifying new properties and partial relief for expanded properties in Freeport tax sites.

0% stamp duty on property to be used for qualifying commercial purposes.

Enhanced capital allowances 0% employer NICs paid on salary up to £25,000 p/a applicable for 3 years per eligible employees (new hires who spend 60% of their working time in the Freeport).

100% first year allowance for qualifying expenditure of plant & machinery. 10% tax deduction per annum.

CUSTOMS BENEFIT

Customs Benefits help enable the tariff-free movement of goods for both export and import through simplified customs procedures and relate to the timing of recognising investments and therefore offer a cashflow benefit to businesses.

Duty deferral for goods stored on-site and duty inversion for goods exiting the Freeport. Savings from duties that do not need to be paid on outside goods and attract a lower tariff than their component parts.

Duty exemption for goods that are exported from the Freeport plus simplified and more streamlined import procedures.

Liverpool
City Region
Freeport

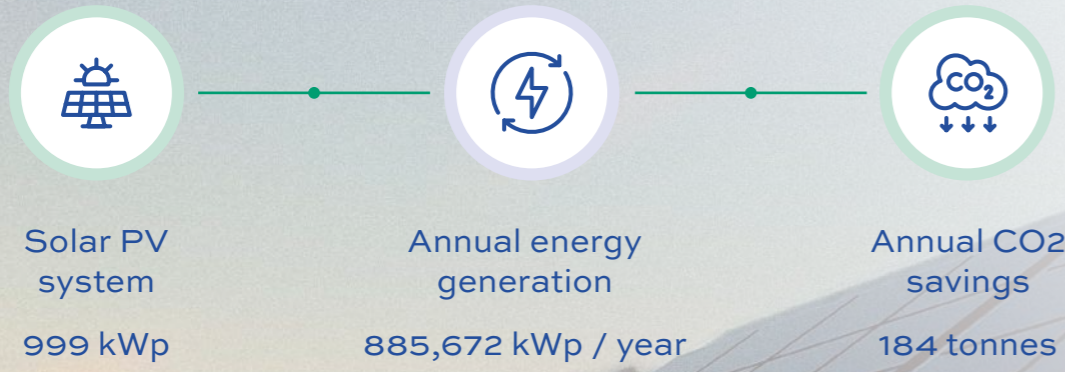


TAX
BENEFIT



CUSTOMS
BENEFIT

A highly efficient building with a massive 999 kWp solar PV system.



Potential net-zero carbon operation

A large 999 kWp rooftop solar array is designed to help offset the building's power needs. There is the opportunity to purchase the solar energy generated, resulting in significant environmental performance for occupiers benefiting from electricity offset, carbon savings and reduced running cost.

CERTIFIED:

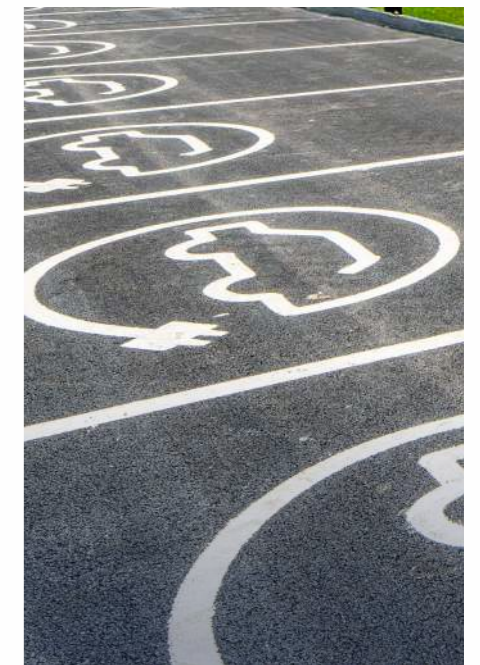


BREEAM Excellent



EPC 'A+' rating

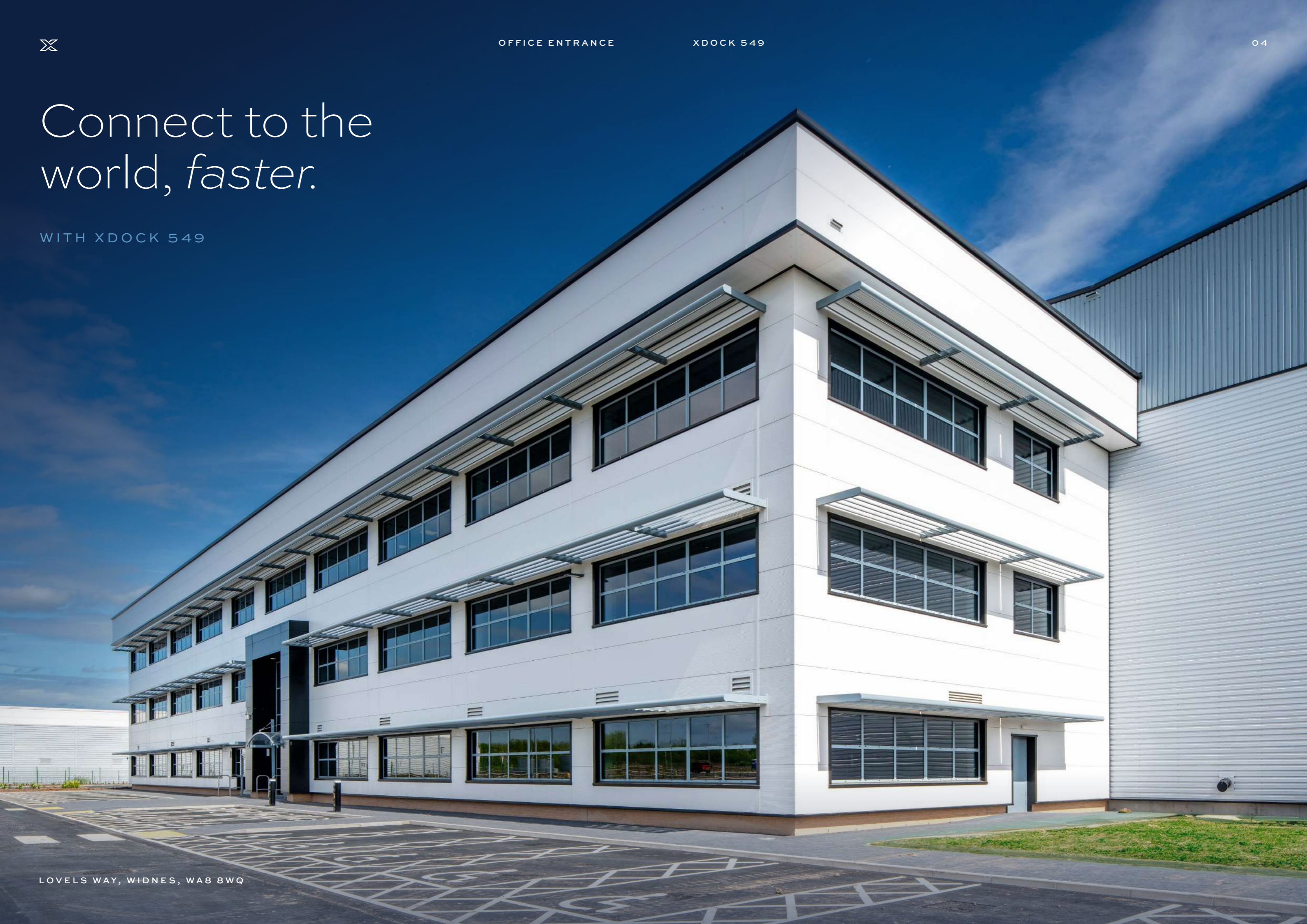
- Highly efficient mechanical ventilation heat recovery
- 48 Accessible (24 disabled) parking bays
- Provision of electric bike charging
- Smart, low energy LED office lighting
- Lighting control system has occupancy and daylight dimming
- Ducting provision for future HGV EV charging
- Water saving & leak detection
- Rainwater harvesting for irrigation of soft landscaping
- 102 cycle spaces
- 24 EV charging points





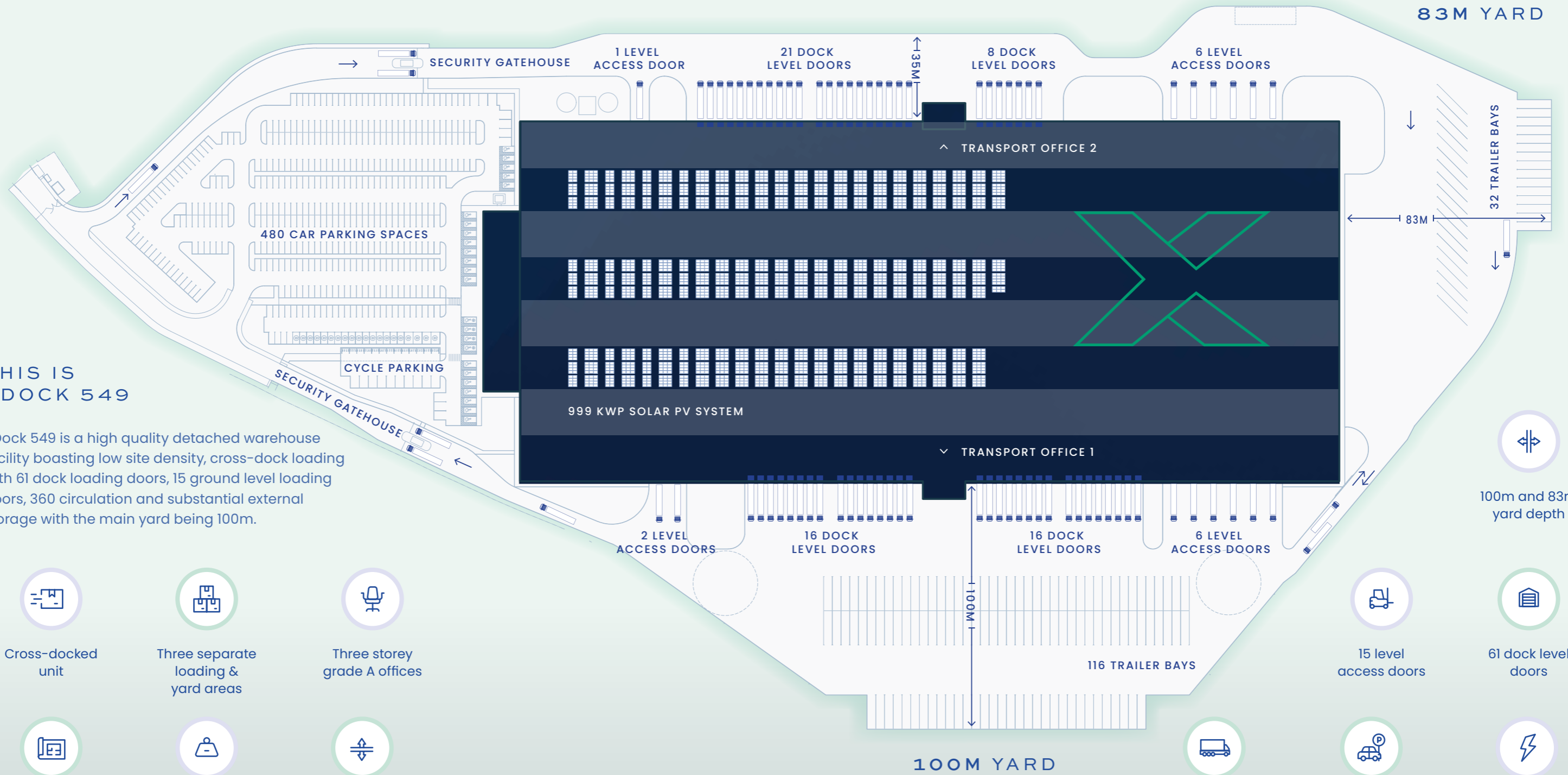
Connect to the world, *faster.*

WITH XDOCK 549



An unrivalled specification with two extra large yards

Area	Sq Ft (GIA)	Sq M (GIA)
Warehouse	511,541	47,524
3 Storey Offices	33,981	3,157
Transport Offices 1 & 2	5,957	553
Gatehouse 1 & 2	214	20
Total	551,693	51,254



THIS IS XDock 549

XDock 549 is a high quality detached warehouse facility boasting low site density, cross-dock loading with 61 dock loading doors, 15 ground level loading doors, 360 circulation and substantial external storage with the main yard being 100m.



Cross-docked unit



Three separate loading & yard areas



Three storey grade A offices



Low site density



Floor loading of 50kN/m²



15m minimum eaves



15 level access doors



61 dock level doors



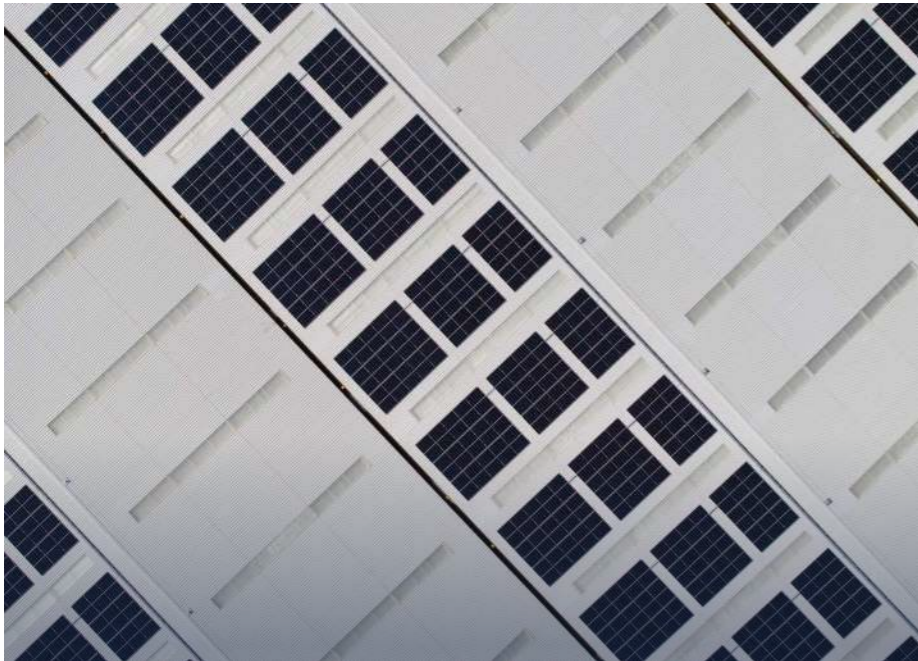
148 trailer bays



480 car parking spaces



Up to 2.4 MVA of power





Freight to EU, NA, SA & AS



Regional, national and international connectivity.

NATIONAL

XDock 549 enjoys superb connectivity, with Junction 6 of the M62 / Junction 1 of the M57 just a 6-minute drive away via the A5300 dual carriageway. Additionally, easy access to the M56 is available through Junctions 11 & 12. The Silver Jubilee Bridge and the new Mersey Gateway Bridge further enhance the connectivity, providing excellent links to Runcorn and beyond.

INTERNATIONAL

Liverpool hosts one of the UK's most extensive and busy ports, managing a varied array of cargo from and to worldwide destinations. The Port of Liverpool dominates Britain's container trade with direct links to North and South America and links to Australia and Asia. The Port of Liverpool's connectivity spans the globe.

Location	Miles	Minutes	Train Stations	Miles	Minutes
A5300	1	3	Runcorn	5	12
M62 J6	4	6	Widnes	6	16
Widnes	3	8	Warrington Bank Quay	10	20
M6	14	18	Liverpool Lime St	11	26
Liverpool	12	30	Manchester Piccadilly	31	45
Manchester	30	50	Birmingham New St	95	150
Birmingham	93	140			
London	206	240			

Airports	Miles	Minutes	Ports	Miles	Minutes
Liverpool John Lennon	4	10	Port of Liverpool	18	33
Manchester	26	32	Holyhead	100	120
East Midlands	90	110	Immingham	137	150
Heathrow	203	230			



Reach the M62 or M57 in only 6 minutes.



Local demographics and regional development.

POPULATION & LOCAL INVESTMENT

XDock 549 is strategically positioned to benefit from Liverpool's extensive infrastructure and robust labour market. With 35 million people living closer to Liverpool than to southern ports, the site is ideally located to serve a vast consumer and labour market. Liverpool's thriving £1.82 billion maritime economy further reinforces its status as a logistics hub.

XDock 549 also enjoys access to a substantial and skilled workforce, with 58,691 unemployed individuals within a 30-minute drive and 43% of the local population educated to Levels 1-3, ensuring a diverse and capable talent pool for warehousing and logistics operations.



£400m deep water terminal accommodates the world's largest ships



£1bn invested in Liverpool's intermodal infrastructure



35 million people live closer to Liverpool than southern ports



A growing £1.82bn maritime economy



Unemployed population of 58,691 within a 30 minute drive time



43% of the population are educated to levels 1-3 within a 30 minute drive

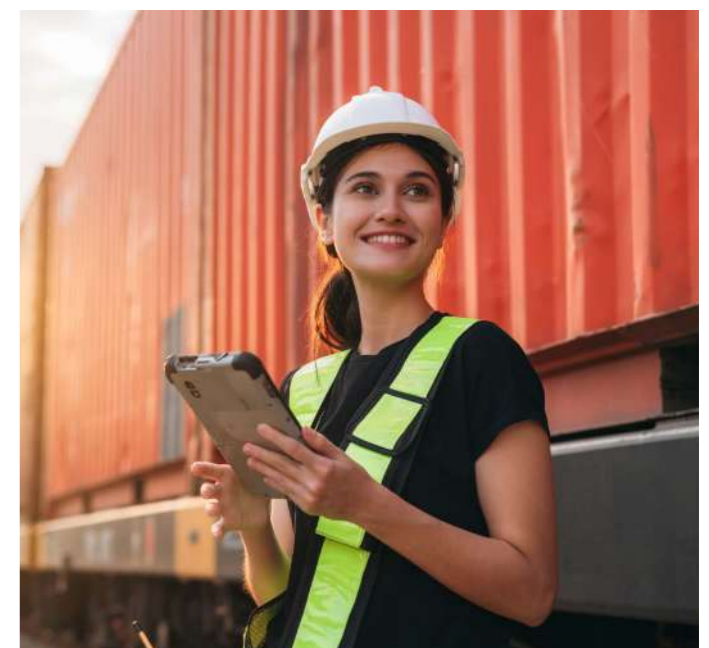
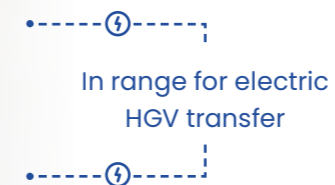
CLOSE TO THE LIVERPOOL SUPER PORT & WIDNES RAILFREIGHT TERMINAL

Widnes Railfreight Terminal has experienced significant investment, enhancing its role as a key logistics hub in the North West. Recent developments include the expansion of daily rail services.

The £400 million Liverpool2 deep-water terminal has significantly enhanced the port's capacity and efficiency, attracting major shipping lines and boosting trade volumes throughout the region.

🕒 16 mins
Widnes Railfreight

🕒 33 mins
Port of Liverpool



Connect to the world, faster.

XDOCK549.CO.UK

CBRE

0161 455 7666

www.cbre.co.uk

Paul Cook

paul.j.cook@cbre.com

+44 (0) 7793 119 221

Darren Hill

darren.hill2@cbre.com

+44 (0) 7590 485 287

savills.co.uk

savills

0161 236 8644

Jonothan Atherton

jatherton@savills.com

+44 (0) 7778 050 197



MIRASTAR



**Liverpool
City Region
Freeport**